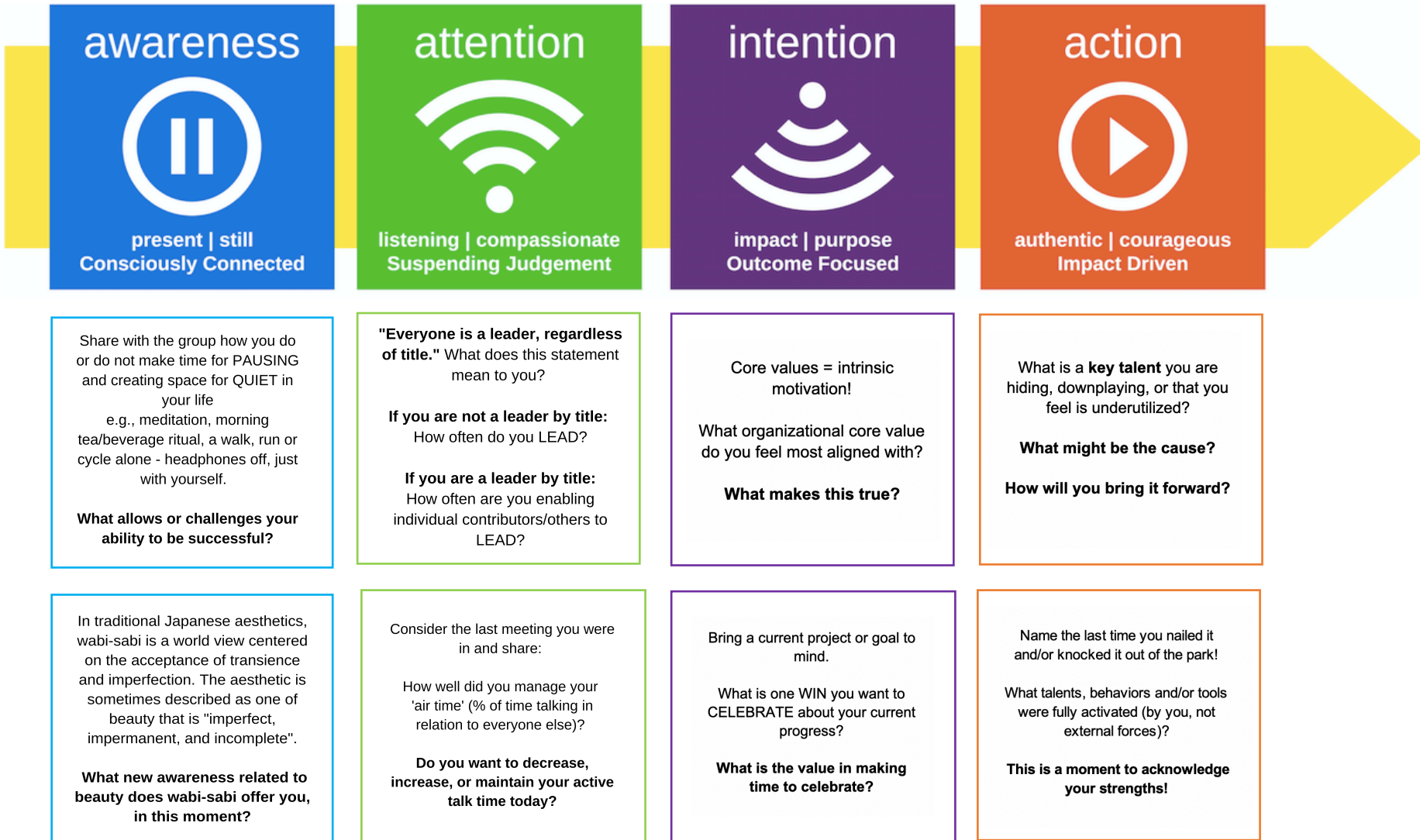


> QUICK CULTURE CONNECTS <



> see REVERSE for HOW TO USE <

> QUICK CULTURE CONNECTS <

> HOW TO USE <

> **FOLLOW THE PATH** of the Mindful Leadership Model, discussing these prompts designed to serve three core purposes:



- **Deepen co-worker connection**
- **Build Emotional Intelligence**
- **Increase Engagement**



> **FORMAT:** VIRTUAL, In Person, Hybrid



> **TIME PLANNING:** 2-minutes per person per prompt!



> **1:1 CHECK-INS:** manager and team member follow the path – from awareness to action - over multiple meetings, sharing their reflections on one prompt per meeting.

> **SMALL GROUPS OPTIONS:**



- Have everyone share their response to the same prompt, broadening the discussion
- Let each member choose one prompt to answer (2 min limit)
- Randomly distribute the prompts amongst the group and each answers a different one (2 min limit)

> **LARGER GROUPS:**



- Create breakouts in Pairs or Threes.
- Choose one prompt for all to discuss OR multiple prompts to rotate. Place in the chat, if virtual

These **QUICK CONNECTS** are resourced from our [MINDFUL WORK: THE EXPERIENCE](#) base game deck.. From our Full Board Game experience to Companion Decks, we've got workplace development covered!

Use code **connect** for a 10% discount at check out. www.experiencemindfulwork.com

MINDFUL@WORK:
THE EXPERIENCE!